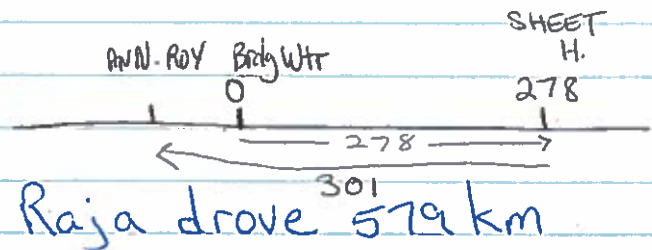
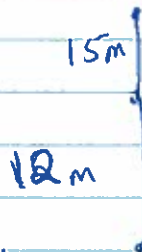


7.

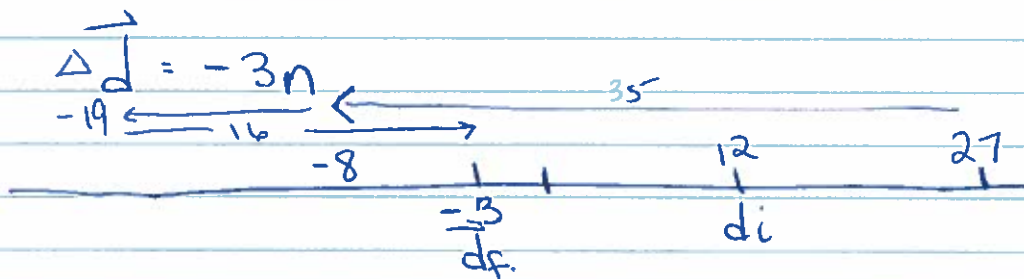
$$\begin{aligned}
 d &= d_1 + d_2 + d \\
 &= 278 + 301 \\
 &= 579 \text{ km}
 \end{aligned}$$



8.



$$d = 12 + 15 + 35 + 11 + 16 = 89 \text{ m}$$



$$\begin{aligned}
 \Delta d &= +12 + 15 - 35 + 11 + 16 \\
 &= -3 \text{ m}
 \end{aligned}$$

The distance was 89m in total.

The displacement was  $-3\text{m}[\text{S}]$