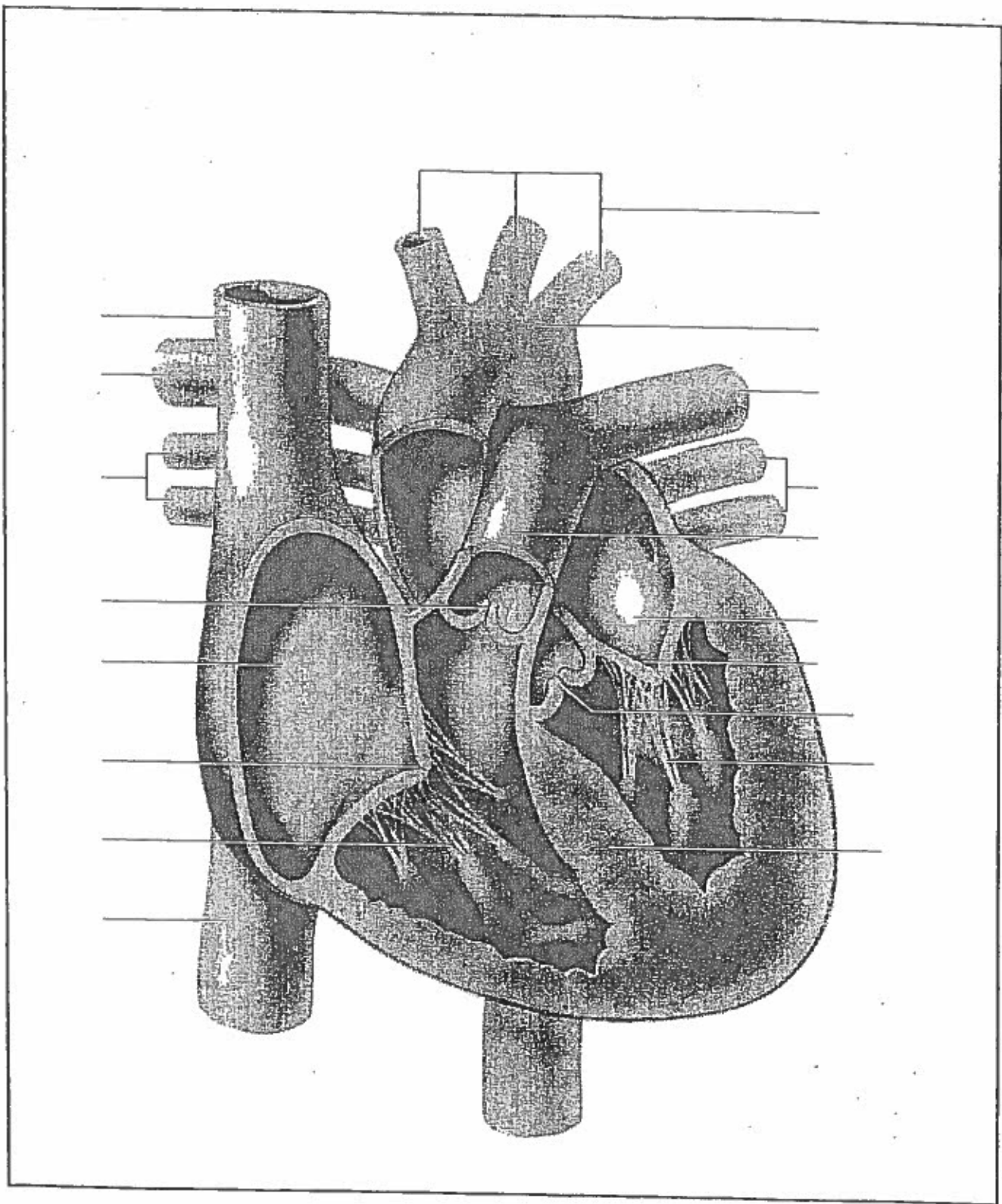


MAMMALIAN HEART



The Path of Blood: Pulmonary Circulation

1. The right atrium collects oxygen-poor blood from the superior and inferior vena cavae
2. From the right atrium, blood flows into the right ventricle where it is pumped into the pulmonary arteries.
3. The pulmonary arteries take the blood to the lungs to dump CO₂ and pick up O₂.
4. This oxygen-rich blood returns to the heart via the pulmonary veins.

The Path of Blood: Systemic Circulation

1. The left atrium passes oxygen-rich blood to the left ventricle.
2. The left ventricle pumps blood into the aorta which branches into arteries and arterioles that go to all body parts
3. Arterioles connect with capillaries where O₂ and nutrients are delivered and CO₂ and wastes are picked up

The Path of Blood: Systemic Circulation (con't)

4. Capillaries run into venules which run into veins, which return blood to the heart.
5. The superior vena cava collects blood from the lower body.
6. This oxygen-poor blood is emptied into the right atrium of the heart.