

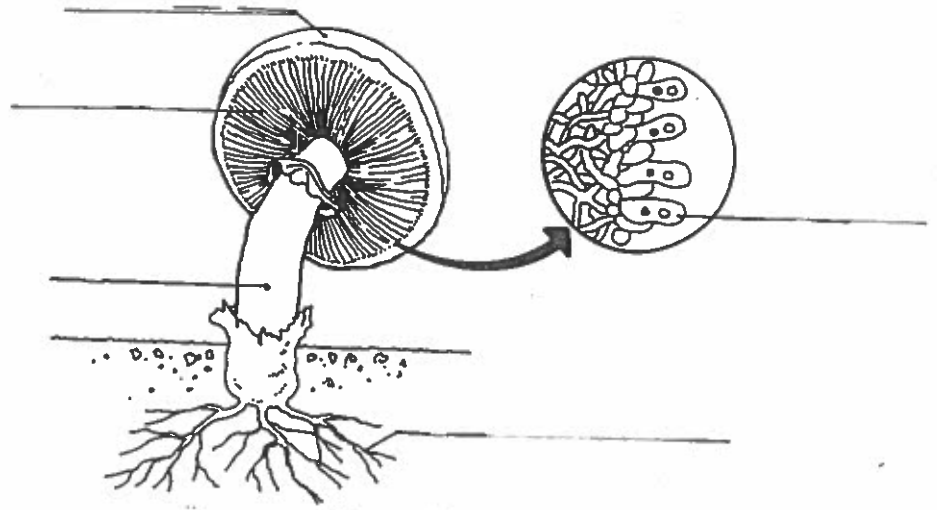
Three Types of Fungi

Name: \_\_\_\_\_

Phylum: \_\_\_\_\_

Label the following parts on the diagram of the common mushroom below. (Nelson p. 366)

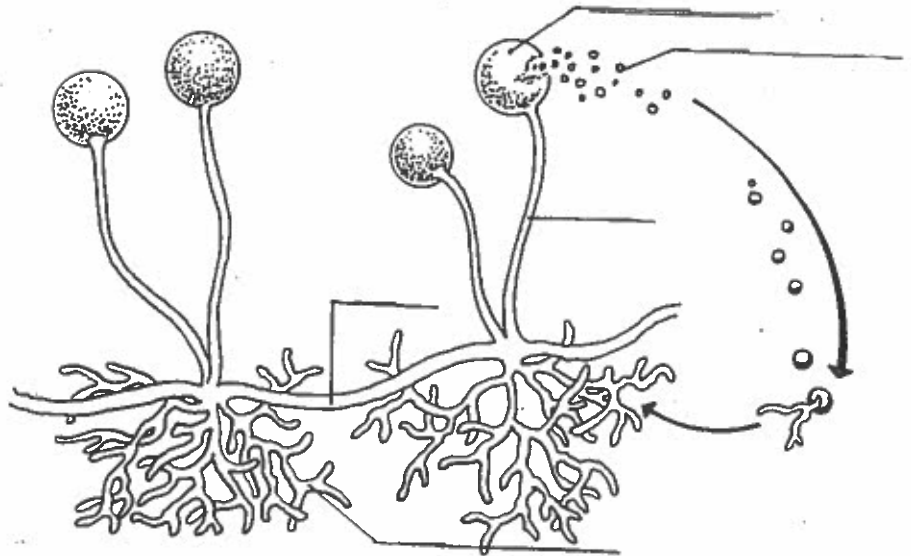
- a. Cap
- b. gills
- c. stalk or stipe
- d. basidia cell (produces spores)
- e. mycelium



Phylum: \_\_\_\_\_

Label the following parts on the diagram of the bread mold below. (Nelson p. 369)

- a. sporangia (sporangium)
- b. spores
- c. sporangiophore
- d. stolon
- e. mycelium



Phylum: \_\_\_\_\_

Label the following parts on the diagram of the yeast below.

- a. bud
- b. cell wall
- c. nucleus
- d. vacuole
- e. cytoplasm

